

TP-U0260ES Unit Type Body Surface Temperature Checker



**To detect a person who have a fever!
Easy to check the body surface temperature!**

TP-U is a body surface temperature measuring unit that installs 2000 pixels thermal imaging sensor.

It quickly measures the body surface temperature and if detects the alarm point temperature (ex. 37.5°C) then the failure lamp lightens. Install at employee entrance, school entrance, crowded facilities, etc and simply check the fever.



FEATURES

- Measures body surface temperature just in 3 seconds.
- Easy operation and self check by confirming status lamps.
- Hygienic because non-contact measuring.
- Prepared for stand-alone operation.
- Exclusive application software
- Universal power supply, 100 to 240 VAC.
- Auto Correct: Screening function provided. Calculate the measurement correction value of the body surface temperature, which is affected by ambient temperature and reduce the effect. Then it automatically set the correction value by reflecting the alarm value for the judgment. Available for simple operation at semi-outdoor !
- Manual Correct: Manually set offset adjustment of measuring temperature by PC is provided. Available for arbitrary setting of offset value !

For crowded places!

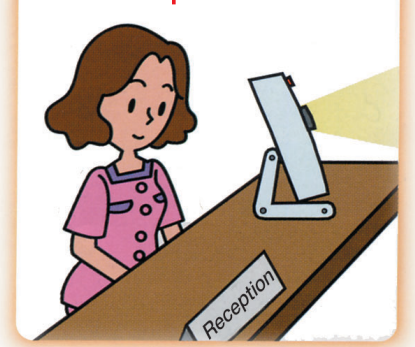
At the employee entrance...



At the school entrance...



At the reception desk...



*This unit is a sensor to measure a surface temperature and is not a clinical thermometer. This unit cannot be used for medical treatment or medical examination.

OPERATION EXAMPLE

Entrance check where the ambient temperature is stable.

Recommended Function: Manual Correct

The temperature inside the mouth is resistible to the outside temperature and stable measurement is possible.



Preparation: Please warm up for 60 minutes before using.

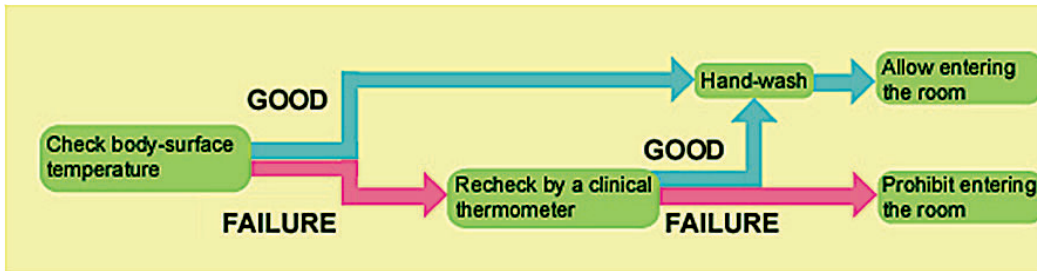
Entrance check where the ambient temperature fluctuates.

Recommended Function: Auto Correct

When using semi-outdoor, Avoid direct sunlight and in the weather.



FLOW

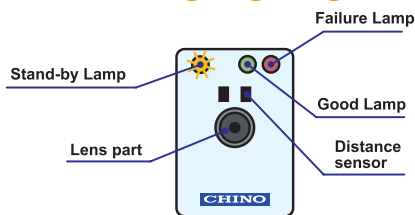


Example of How to Check

1 Confirm the orange lamp is lighting.

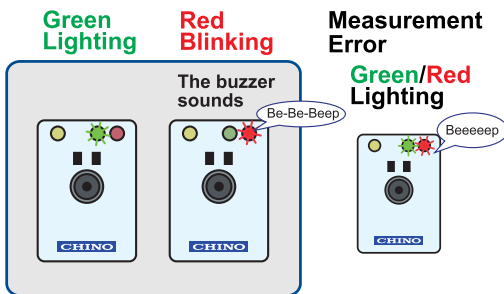
Confirm that the unit is stand-by.
Body surface temperature might change by the ambient temperature.

Orange lighting



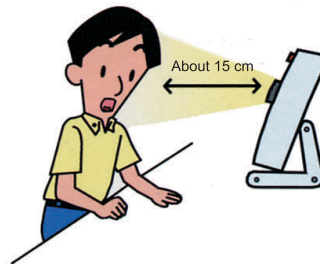
3 Confirm the judgment result.

Green lamp lightens when below the set alarm point (ex. 37.5°C)
or red lamp blinks.



2 Measure body surface temperature.

Lean your head to the sensor about 15 cm.
Wait 3 seconds until it sounds "Be-Be-Beep".



4 Reconfirmation



< Cautions when using >
This unit is a sensor to measure a surface temperature and is not a clinical thermometer.
The result is different to the body temperature.
After drinking cold beverages or expose to cold air then there is a possibility of detecting the body surface temperature lower.
Vice versa, if drinking hot beverages or expose to hot air, then it might detect the body surface temperature higher.

Judgment Condition

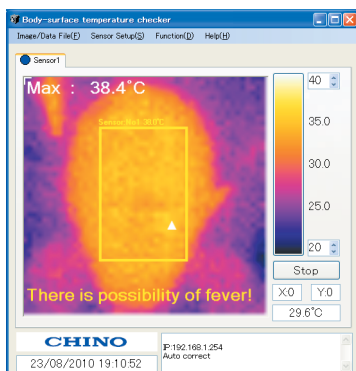
Good/Failure judgment by alarm set point. Distinct the result by lamp and buzzer.

Measurement Error Condition

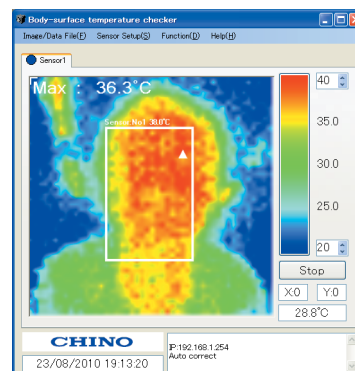
When measuring too far away (more than 25cm) or when it is too close (less than 10cm)

Body surface temperature checker application software (standard provision)

Set various setting and display thermal image by PC.



Available to display comments



Display thermal image

SPECIFICATIONS

Temp :	20 to 40°C
Accuracy rating :	±0.5°C at 37°C Ambient temperature 25°C)
Detector :	Thermopile array Approx. 2000 Pixel
Wavelength :	Center wavelength 10μm
Viewable Angle :	60° x 60°
Radius Resolution :	21.8mrad
Frame Speed :	1Hz
Focus :	Fixed Focus
Communication Interface :	10BASE-T/100BASE-TX
Contact Output :	2 points, Non voltage contact output
Power Supply :	100 to 240 V AC (universal power supply)
Working Temp :	0 to 40°C
Working RH :	10 to 80% (No dew condensation)
Weight	Approx. 0.7kg
Installation :	Wall mounting, desktop or tripod (Please prepare the tripod at your side)
Warm up time :	Approx. 60 minutes

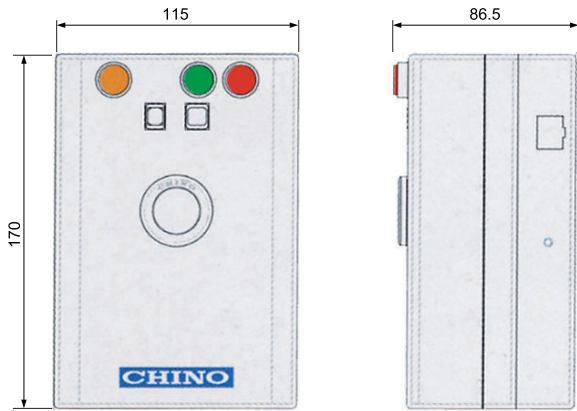
FUNCTIONS

Temp Judgment Function :	Set per 0.5°C
Designate Alarm Judgment Area :	Change Judgment Area
Comment Function :	Display comment to the judgment result of value exceeding the setting
Data Storage :	Auto save by measurement data (CSV) and thermal image (JPEG)
Measurement Temp. Correction :	Manual Correct: Set per 0.1°C by PC Auto Correct: The unit automatically set the correction value
Language :	Japanese, English, Chinese (Simplified characters) and Korean

STANDARD CONFIGURATION

- Unit Type Body Surface Temperature Checker
 - Wall-mounting holder (For both wall-mount and tripod)
 - Table-stand
 - Urea capped screw (2 pieces)
 - Wood screw (2 pieces)
 - LAN cable
 - Lens cap
 - CD-ROM (Application software manuals & Instruction manual)
 - Quick manual
 - Measuring Position Display Plate
 - Operation Procedure Sticker
 - Power cable (3.3m)
 - AC Adapter
- (Required to use AC adapter according to each country safety standard other than Japan and North America so contact CHINO for the details.)

DIMENSIONS



Unit : mm

ACCESSORIES

Measuring Hood
Model: SPN

Used for when installing TP-U



Specifications subject to change without notice. Printed in Japan (I) 2020.3

CHINO CORPORATION

32-8 KUMANO-CHO, ITABASHI-KU, TOKYO 173-8632

Telephone : +81-3-3956-2171

Facsimile : +81-3-3956-0915

E-mail : inter@chino.co.jp

Website : www.chino.co.jp/